



Picture Production and Bitmap Conversion

Picture Production and Bitmap Conversion for GDEM1085T51



1. Make Picture

This screen supports two colors, black and white, both of which are standard colors. In practice, you can refer to the color chart of the Windows system's built-in drawing software. When creating images, you need to create a 1360×480 resolution black and white monochrome image and save the image in BMP or jpg format.

Conception:

1.1. Monochrome: black, white 

1.2. Three colors: black, white, red/yellow  ()

1.3. Four colors: black, white, red, and yellow 

1.4. Seven colors: black, white, red, yellow, blue, green, orange




2. Bitmap Conversion

Bitmap conversion can be done using ImageToEpd software, which can be downloaded from the official website (<https://www.good->


display.com) . The interface for setting bitmap conversion parameters is shown in Figure 1:

2.1. Open the ImageToEpd software and click the "Open File" button

 , Import the image that needs to be converted, Then the status information bar will display the resolution and size of the currently

imported image  ;

2.2. IC type: Select "UC"  ;

2.3. Click on "Save C File"  , Save the converted array to a file with an extension of ". C";

2.4. Finally, replace the corresponding array in the program with the array in the file ". C".

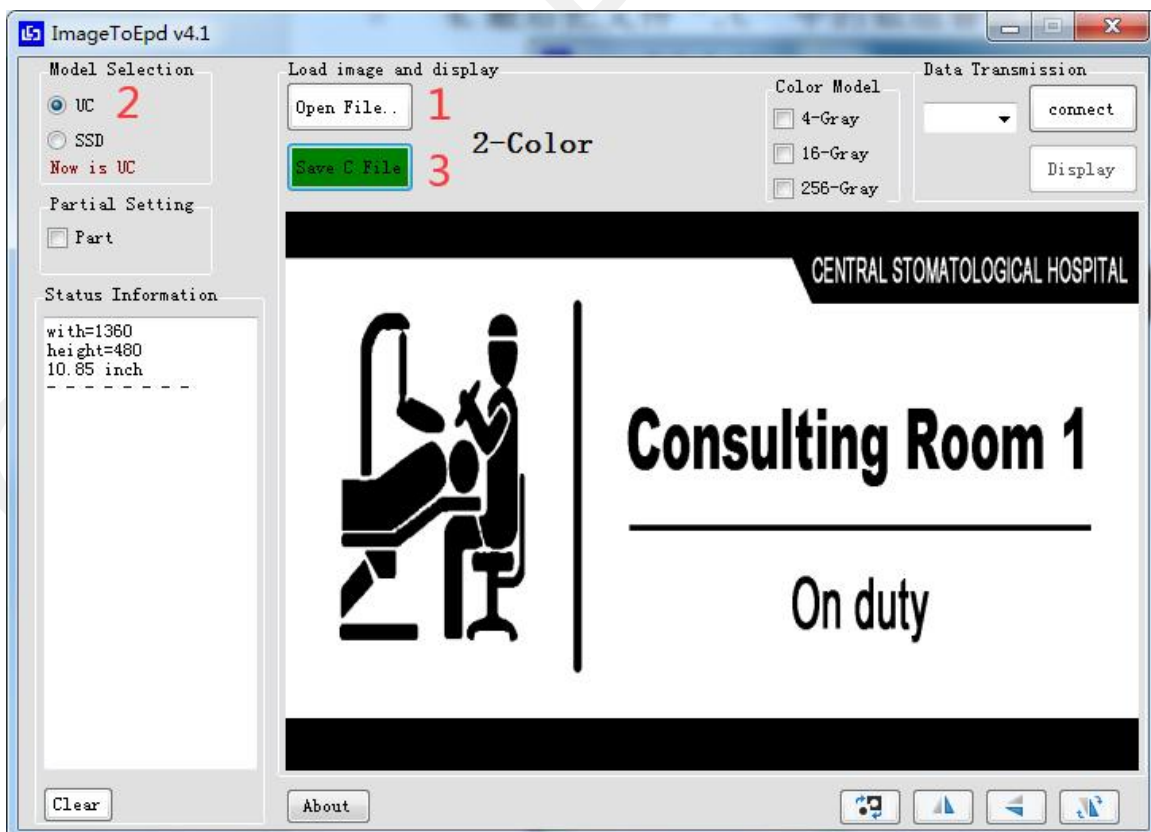


Figure 1, Black and white image settings